

INFUSING THE WELLNESS COURT MODEL INTO THE FAMILY COURT

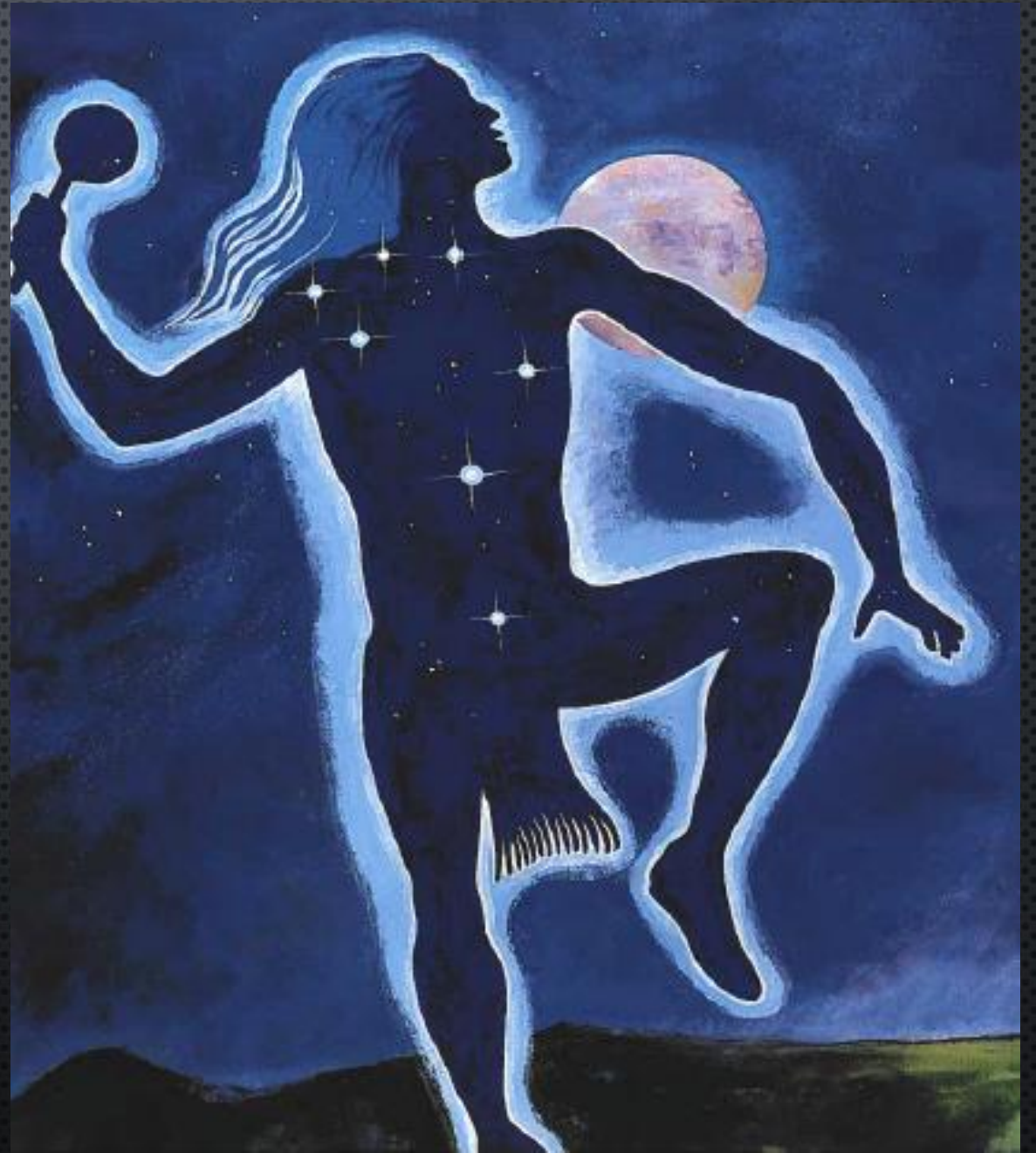
CARRIE E. GARROW

CHIEF JUDGE, SAINT REGIS MOHAWK TRIBAL COURT

2019 NADCP ANNUAL CONFERENCE

Star Dancers

Skywoman, *Legends of the Iroquois* by Joanne Shenandoah and Douglas M. George, Illustrated by John Fadden & David Fadden



CHILDREN TODAY

- 11% LIVE WITH ONE OR MORE PARENT WHO IS DEPENDENT ON ALCOHOL OR NEEDS TREATMENT FOR DRUG ABUSE
- 15% LIVE BIRTHS WERE PRENATALLY EXPOSED
- AI/AN - 13.4 PER 1000 REPORTED MALTREATMENT
- WHITE CHILDREN - 8.4 PER 1000 REPORTED MALTREATMENT



CHILDREN TODAY

- 1% AI/AN ARE ARE INVESTIGATED FOR MALTREATMENT AND 3% ARE PLACED IN OUT-OF-HOME CARE
- URBAN STUDY – AI/AN CHILDREN ALMOST TWO TIMES MORE LIKELY TO BE REMOVED DESPITE CAREGIVERS OF WHITE CHILDREN SLIGHTLY MORE LIKELY TO HAVE DRUG AND ALCOHOL ABUSE PROBLEMS



IMPACT ON CHILDREN



PARENTAL ALCOHOL AND DRUG USE IS SECOND MOST FREQUENT REASON CHILDREN ARE REMOVED



ASSOCIATED WITH LONGER OUT-OF-HOME PLACEMENTS



HIGHER RATES OF CHILD RE-VICTIMIZATION



HIGHER RATES OF TERMINATION OF PARENTAL RIGHTS



MORE LIKELY TO REENTER FOSTER CARE AFTER REUNIFICATION



POOR PARENTING



SUBSTANCE USE IS ASSOCIATED WITH TRAUMA



YOUTH MORE AT RISK TO EXPERIENCE SUBSTANCE USE DISORDERS

USING HEALING TO WELLNESS PRINCIPLES IN FAMILY COURT

- WHAT IS THE KEY TO SUCCESS IN YOUR HEALING TO WELLNESS COURT OR DRUG COURT?

THE FAMILY COURT TEAM

- WHY USE A TEAM?
 - PRIOR COLLABORATIONS HAVE NOT PRODUCED BETTER RESULTS
 - REASONABLE/ACTIVE EFFORTS
- JUDGES LEAD THE WAY
- DEVELOP A SHARED VISION AND MISSION STATEMENT
- WHO IS ON YOUR TEAM?
- THE PITFALLS OF COLLABORATION



MOVE AWAY FROM ADVERSARIAL PROCESS

- HOW DOES AN ADVERSARIAL PROCESS HELP CHILDREN?
- MAINTAIN ROLES, BUT FOCUS ON THE BEST INTEREST OF THE CHILD
- STAFFINGS
- MORE FREQUENT HEARINGS



IDENTIFY EARLY – SECRET IDENTITIES ARE NOT HELPFUL

- EARLY ASSESSMENTS
- EARLY COLLABORATION
- CONSEQUENCES OF NOT COLLABORATING



REHABILITATION AND REUNIFICATION

- REASONABLE/ACTIVE EFFORTS
- SOME FAMILIES MAY NEED A PHASED APPROACH (MILESTONES)
- PROVIDE A CONTINUUM OF SERVICES
- FOCUS ON ENTIRE FAMILY AND FOSTER FAMILY
- PARENT TIME IS AN IMPORTANT RESOURCE



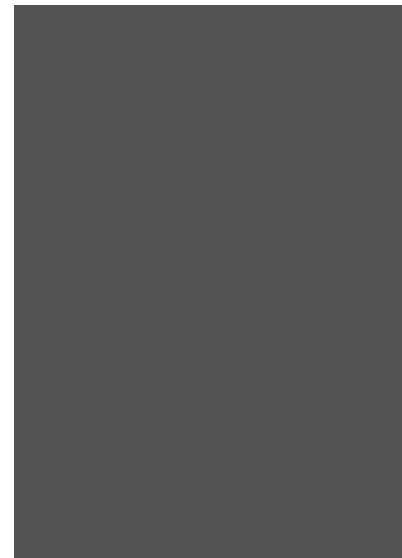
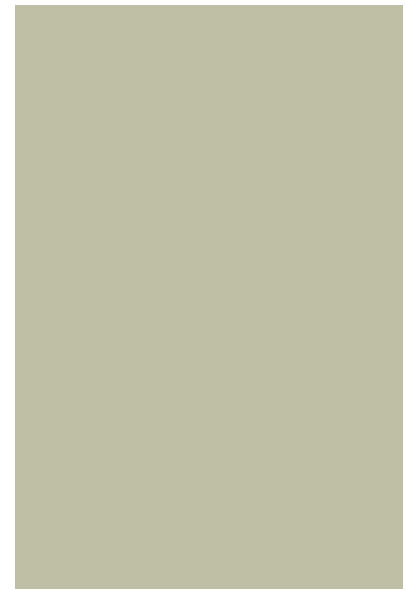
COLLABORATIVE SUPERVISION



- TREATMENT AND CLASSES ARE NOT ENOUGH
- COORDINATED CASE MANAGEMENT IS THE KEY
 - INCREASES SUCCESS AS YOU INCREASE YOUR ABILITY TO LINK FAMILIES TO NEEDED SERVICES
- WARM HAND OFF
- TIMELY TREATMENT
- COLLABORATION NECESSARY - DO NOT OVERWHELM THE FAMILY

IMMEDIATE INCENTIVES AND SANCTIONS

- WHY ARE THEY IMPORTANT?
- INCENTIVES VS SANCTIONS
- 6 MONTH APPROACH OFTEN RESULTS IN A SANCTION
- AND NEVER ANY INCENTIVES



THE ROLE OF THE JUDGE

- INTERACTION WITH TEAM AND FAMILIES IS CRITICAL
- LEAD THE TEAM
- OVERSEE PROVISION OF SERVICES ON A WEEKLY BASIS
- USE A PROBLEM-SOLVING APPROACH



IMPROVE YOUR TEAM

- DEVELOP SHARED OUTCOMES
- MEASURE MORE THAN WHETHER FAMILY RECEIVED SERVICES
- MEASURE JOINT IMPACT
- HOLD TEAM ACCOUNTABLE
- IMPLEMENT FINDINGS AND REMEASURE



CONTINUING YOUR TRAINING

- CROSS TRAIN ON SUBSTANCE USE, MENTAL DISORDERS, AND OTHER ISSUES AFFECT CHILD SAFETY AND THE FAMILY
- DON'T ASSUME TEAM MEMBERS RECEIVE THIS TRAINING
- TRAIN ON CHILD WELFARE LAWS AND PROCEDURES – INCLUDING TIMING REQUIREMENTS
- TRAINING MUST LEAD TO POLICY CHANGES AND LEADERSHIP SUPPORT



TEAM INTERACTION AND SUPPORT

- COLLABORATION AT ADMINISTRATIVE AND LEADERSHIP LEVELS
- BUILD COMMUNITY SUPPORT AND BUY-IN
- BUILD SUSTAINABLE INFRASTRUCTURE (MOUS AND OVERSIGHT TEAMS)





COLLABORATION =
MORE SUCCESSFUL
FAMILIES